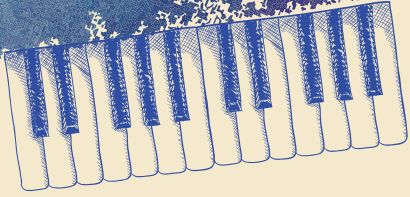


MAP THE MUSIC

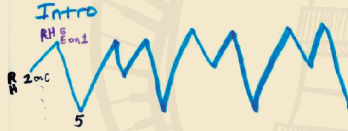


Step One Draw the intro

Draw a line that follows the same pattern as the intro – just connect the dots! Use your finger to trace the notes before drawing it on your map.



Example:



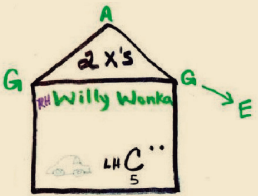
Your Turn:



Step Two Draw the chorus melody

Similar to Step 1, draw the chorus melody of the song. **Get creative here!** In this example, the roof of the house represents the shape of the melody, but you can draw anything you want!

Example:

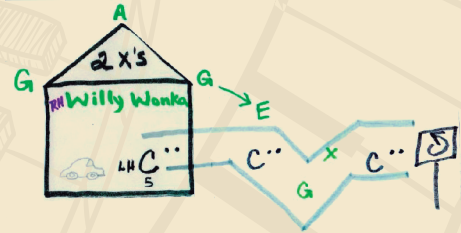


Your Turn:

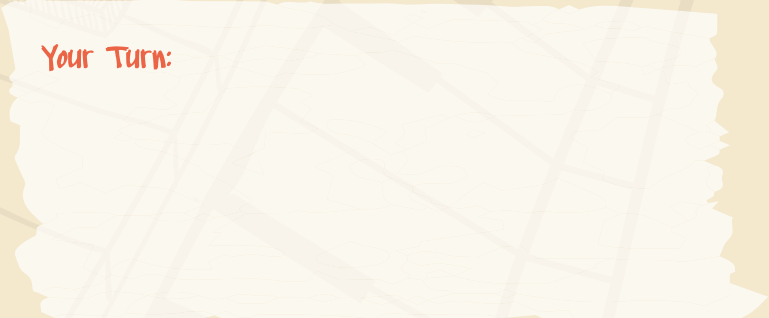


Step Three Draw the chord progressions

Example:

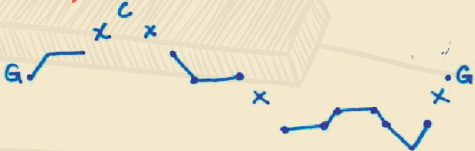


Your Turn:



Step Four Draw the verse melody

Example:



Your Turn:



Step Five Draw the details

Hunt for the obscure details that are easily overlooked – such as changes in the time or key signatures, accidentals, rhythms (don't forget rests!), and note values. Again, get creative here! In this example, the road sign with the arrow shown in Step 3's image represents a repeat, the car is a reminder to "travel" (move to a new hand position), and the square around the "C" is a clue for the student (the note to play is also a C!).

Example:

RH He's Modest Clever and So Smart
2nd B



Your Turn:

